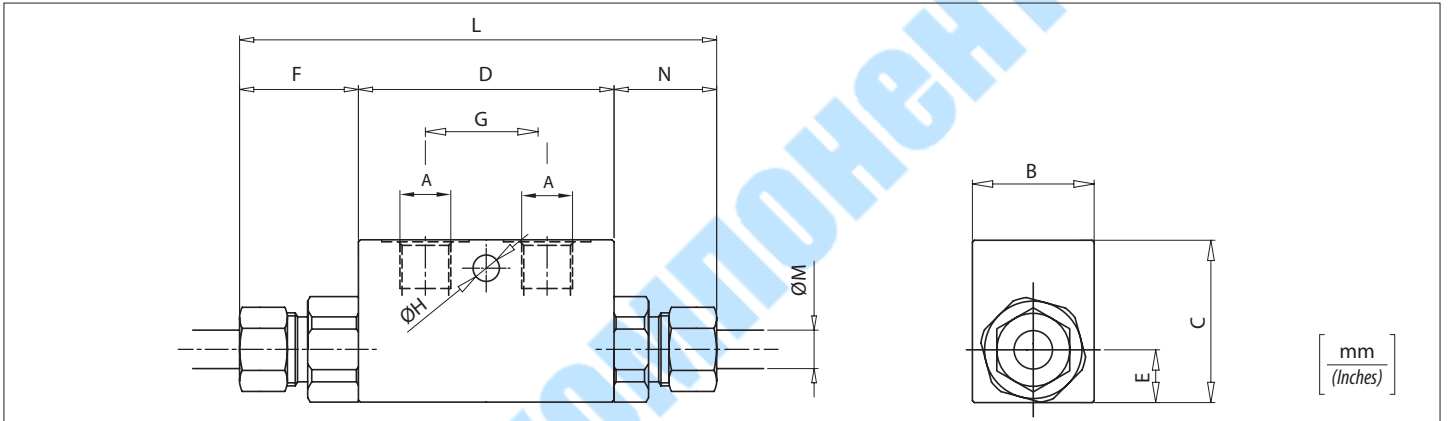
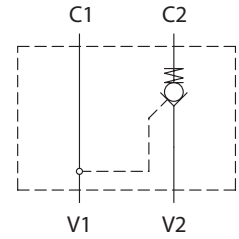


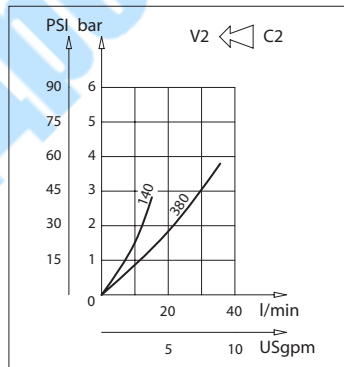
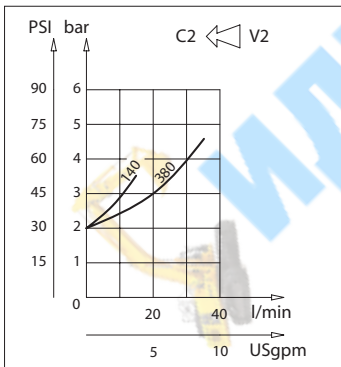
Technische Daten

Технические характеристики

| | |
|---|-------------------------------|
| Hydrauliköl | ISO 6743/4 |
| Минеральное масло | DIN 51524 |
| Viskosität der Flüssigkeit | 10-500 mm ² /s |
| Вязкость жидкости | 45 to 2000 ssu (6 to 420 cSt) |
| Max. Reinheitsklasse mit Filter | ISO 4406:1999 |
| Класс макс. загрязнения с фильтром | Класс Класс 19/17/14 |
| Temperatur der Flüssigkeit | -20°C +80°C |
| Температура жидкости | -4°F + 176°F |
| Umgebungstemperatur | -20°C +50°C |
| Температура окружающей среды | -4°F + 122°F |
| Die Verwendung eines Filters (empfohlene Filterung 15 Mikron) zum Schutz des Ventils ist unerlässlich. Необходимо применение фильтра для защиты клапана (рекомендуемая фильтрация 15 микрон) | |
| Leckage | 0 - 0,25 cm ³ /min |
| Утечка | |



Lastverluste / Падение давления



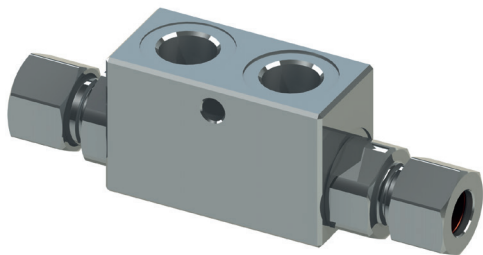
Bestellcode / Код заказа

VRSD - X - Y

| X | Größe / Размер | Y | Größe / Размер |
|-----|----------------|-----|------------------------------------|
| 140 | BSPP 1/4 | T8 | Für Leitung Ø 8 Для Ø 8 трубы |
| 140 | BSPP 1/4 | T12 | Für Leitung Ø 12 Для Ø 12 трубы |
| 380 | BSPP 3/8 | T12 | Für Leitung Ø 12 Для Ø 12 трубы |

Technische Eigenschaften / Технические характеристики

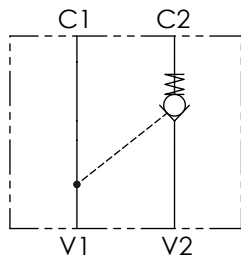
| Code Код | A | Max. Durchsatz Мак. проп. спос. l/min-USgpm | Max. Druck Мак. давление bar/PSI | B | C | D | E | F | G | H | L | M | N | Ungefähres Gewicht Ориент. вес Kg / lb | Steuerungs- verhältnis Соотн. управл. |
|-------------|----------|---|--|-----------|-----------|-----------|-----------|-----------|-----------|------------|------------|----------|-----------|--|--|
| VRSD140T8 | BSPP 1/4 | 10 (2.5) | 320 (4500) | 30 (1.18) | 40 (1.57) | 63 (2.48) | 13 (0.51) | 25 (0.98) | 30 (1.18) | 6,5 (0.26) | 113 (4.45) | 8 (0.32) | 25 (0.98) | 0,59 (1.3) | 1:9 |
| VRSD140 | | 15 (4) | | | | | | 32 (1.26) | | | | | | | |
| VRSD380 | BSPP 3/8 | 35 (9) | | | | | | 28 (1.10) | | | | | | | |



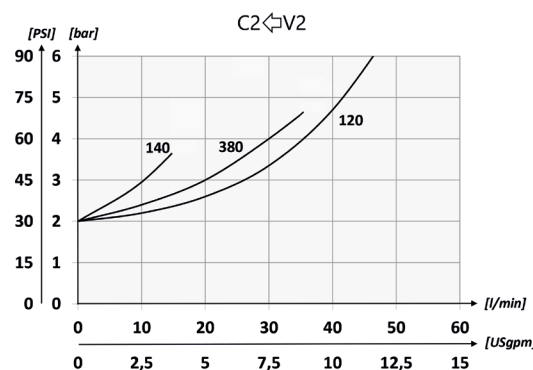
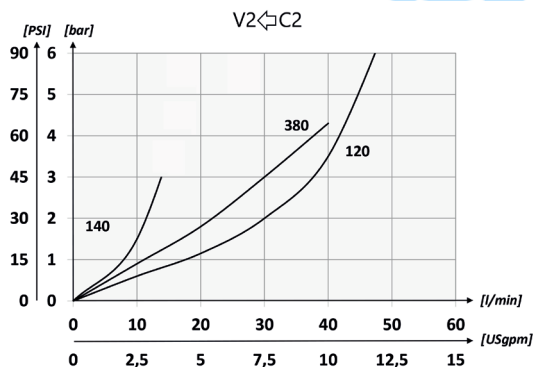
| | | | |
|-------------------------------------|-------------|----|----|
| Codice ordinazione Ordering code | 01 | 02 | 03 |
| | VRSD | | |

| | | |
|-----------|---|--|
| 01 | Valvole di blocco a semplice effetto DIN2353 (DIN2353 single acting pilot check valves) | VRSD |
| 02 | Dimensione (Size) | BSPP 1/4 |
| | | BSPP 3/8 |
| | | BSPP 1/2 |
| 03 | Dimensione tubo (Size pipe) | Per tubo Ø 8 - For Ø 8 pipe |
| | | Per tubo Ø 12 - For Ø 12 pipe standard only for BSPP 1/4 and 3/8 |
| | | Per tubo Ø 15 - For Ø 15 pipe standard only for BSPP 1/2 |

Schema idraulico - Hydraulic circuit

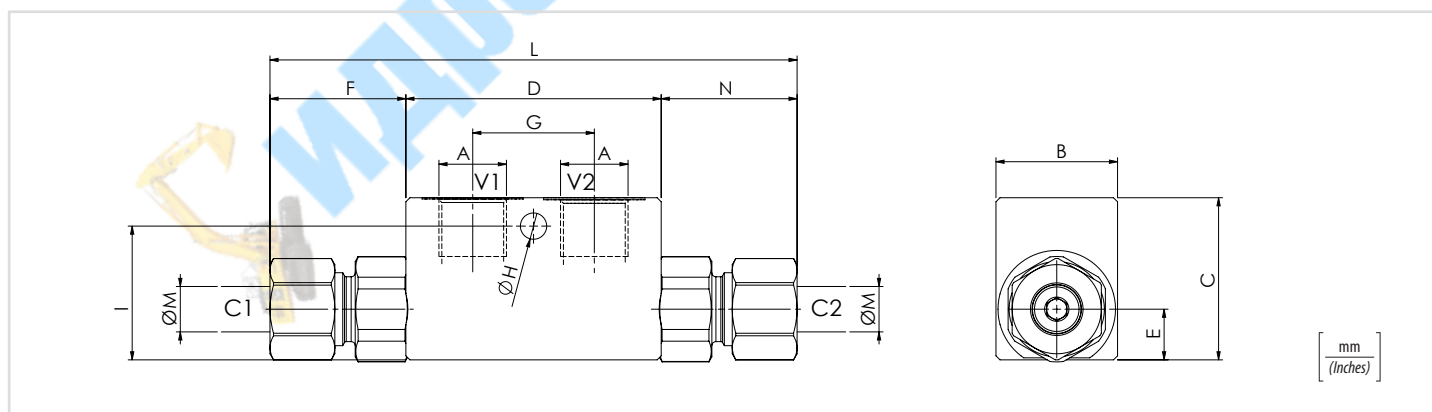


Performances



Dati tecnici - Technical data

| | |
|--|---|
| Olio idraulico/Mineral oil | ISO 6743/4 (DIN 51524) |
| Viscosità olio/Oil viscosity | 15-250 mm ² /s (15 to 250 cSt) |
| Classe di contaminazione max con filtro Max contamination index with filter | ISO 4406:1999 Classe 19/17/14 |
| Temperatura dell'olio/Oil temperature | -20°C +80°C -4°F +176°F |
| Temperatura ambiente/Ambient temperature | -20°C +50°C -4°F +122°F |
| È indispensabile l'utilizzo di un filtro per proteggere la valvola (filtrazione consigliata 15 µm) It is necessary a filter use to protect the valve (advised filtration 15 µm) | |
| Trafilamento massimo Max leakage | 0,25 cm ³ /min - 5 gocce/min 0,015 in ³ /min - 5 drops/min |



Caratteristiche tecniche - Technical characteristics

| Tipo Type | A | Portata max (l/min) Max flow (USgpm) | Pressione max (bar) Max pressure (PSI) | B | C | D | E | F | G | H | I | L | M | Peso approssimativo (kg) Approx weight (lb) | Rapporto di pilotaggio Pilot ratio |
|--------------|----------|--|---|-----------|-----------|-----------|-------------|-------------|-----------|------------|------------|------------|-------------|--|---------------------------------------|
| VRSD140T8 | BSPP 1/4 | 10 (2.6) | 320 (4640) | 30 (1.18) | 40 (1.57) | 63 (2.48) | 12,5 (0.49) | 28 (1.10) | 30 (1.18) | 6,5 (0.26) | 33 (1.30) | 119 (4.69) | 8 (0.31) | 0,62 (1.36) | 1:9 |
| VRSD140 | | 15 (4) | | | | | | | | | | | | | |
| VRSD380 | BSPP 3/8 | 35 (9.2) | | 35 (1.38) | 50 (1.97) | 82 (3.23) | 16,5 (0.65) | 33,5 (1.32) | 36 (1.42) | 35 (1.38) | 149 (5.87) | 15 (0.59) | 1,10 (2.42) | 1:4 | |
| VRSD120 | BSPP 1/2 | 45 (11.9) | | | | | | | | | | | | | |